



WILDWOOD
FLORIDA

CITY OF WILDWOOD

UTILITY DEPARTMENT

711 HUEY STREET

WILDWOOD, FL 34785

PH# 352-330-1346

MEET OUR DEPARTMENT

41 EMPLOYEES AND GROWING

- 15 DISTRIBUTION AND COLLECTIONS STAFF MEMBERS
- 15 WATER AND WASTEWATER OPERATIONS STAFF MEMBERS
- 3 MAINTENANCE STAFF MEMBERS
- 3 ADMINISTRATIVE STAFF MEMBERS
- 3 DIVISION MANAGERS
- 2 SENIOR MANAGERS



FROM START TO
FINISH, WHAT
WE DO

WITHDRAWAL AND TREATMENT OF
POTABLE WATER

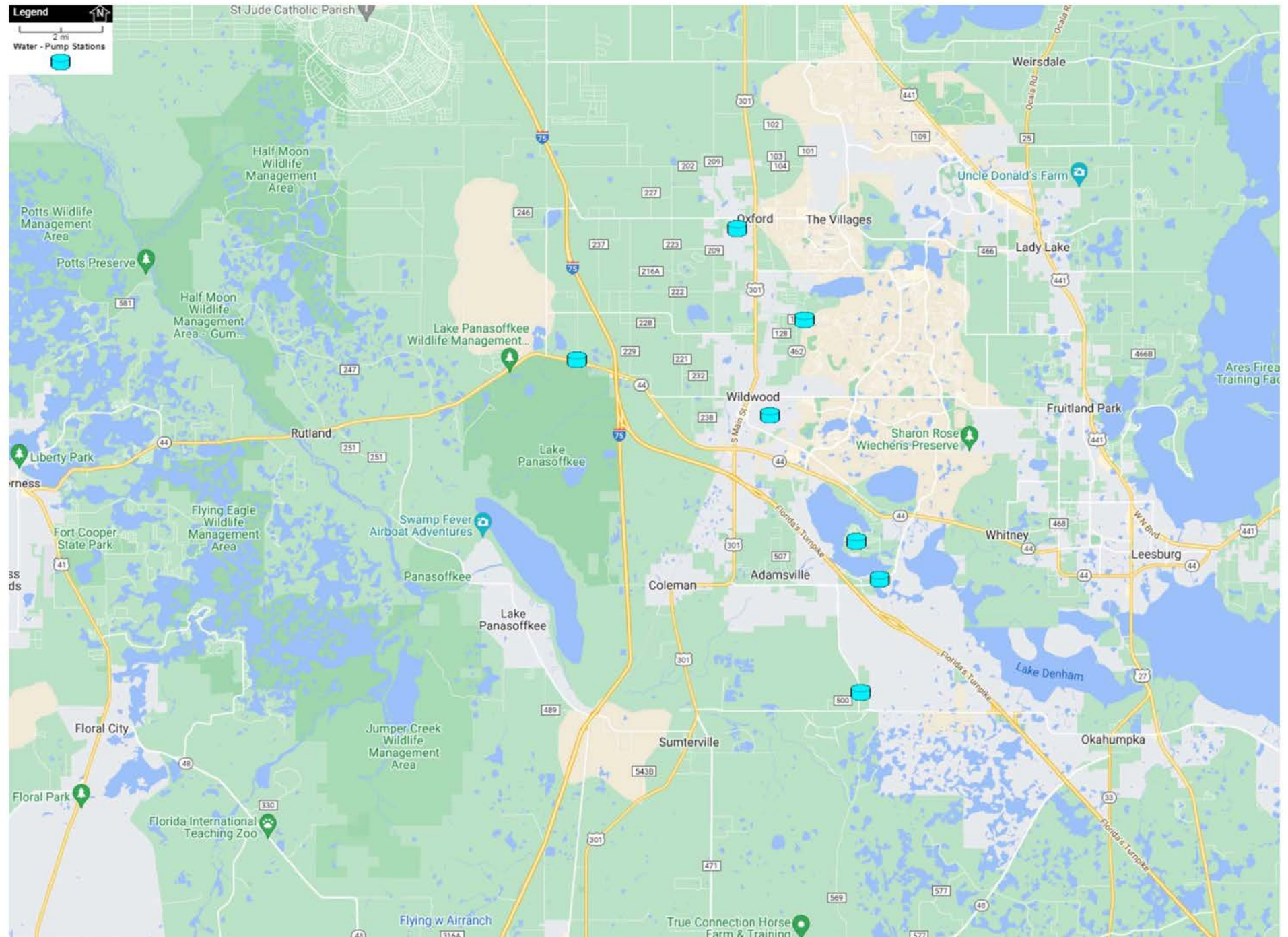
DISTRIBUTION OF TREATED WATER

COLLECTION OF RAW WASTEWATER

PUMPING AND TRANSMISSION OF RAW
WASTEWATER

TREATMENT AND DISPOSAL OF
WASTEWATER

- THE CITY OF WILDWOOD'S WATER TREATMENT SYSTEM CONSISTS OF 7 WATER TREATMENT PLANTS WITH 10 WELLS
- THESE FACILITIES PRODUCE AN AVERAGE OF 1.9 MGD OF SAFE DRINKING WATER THAT MEETS OR EXCEEDS ALL FDEP DRINKING WATER STANDARDS

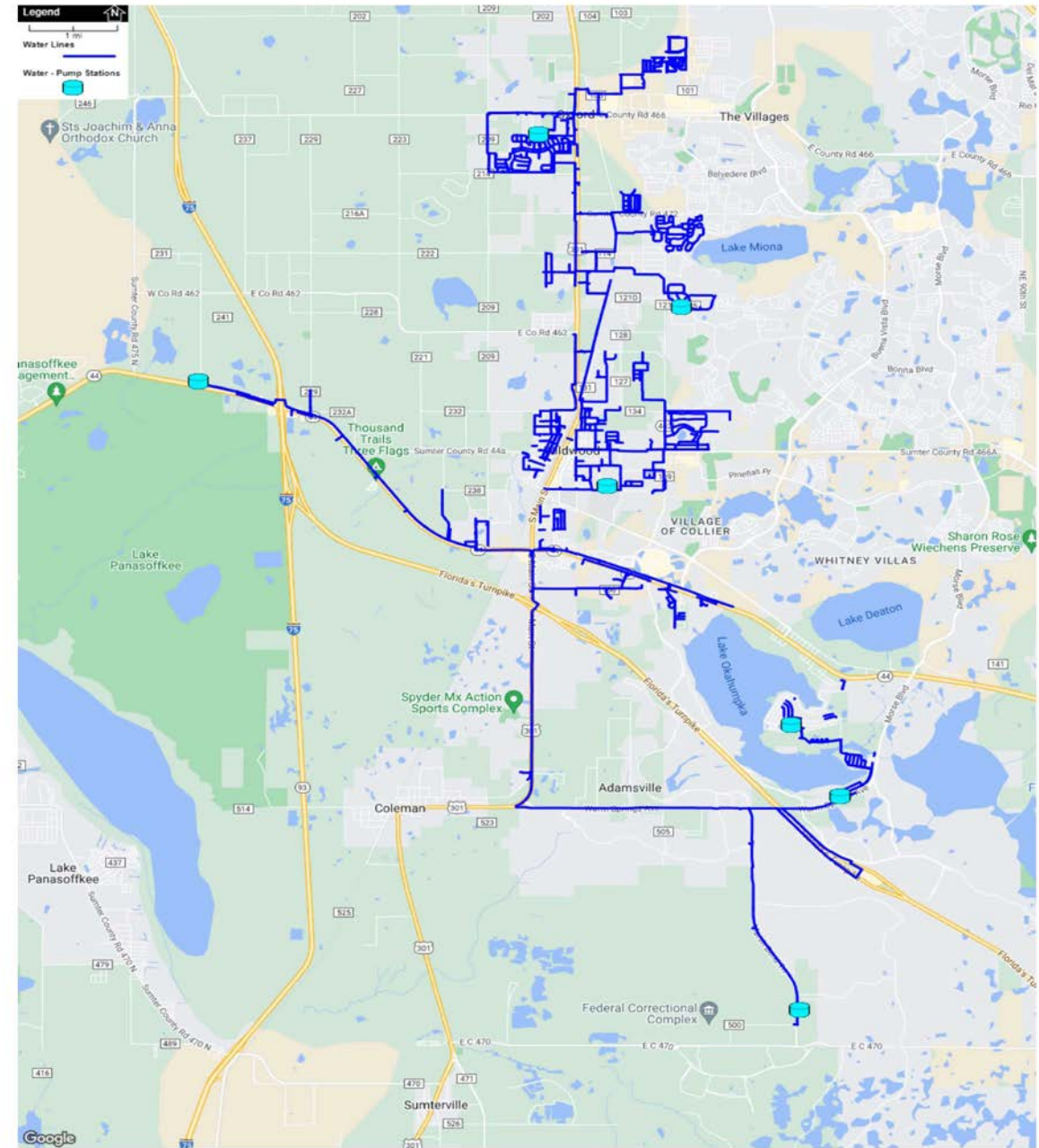






DISTRIBUTION SYSTEM

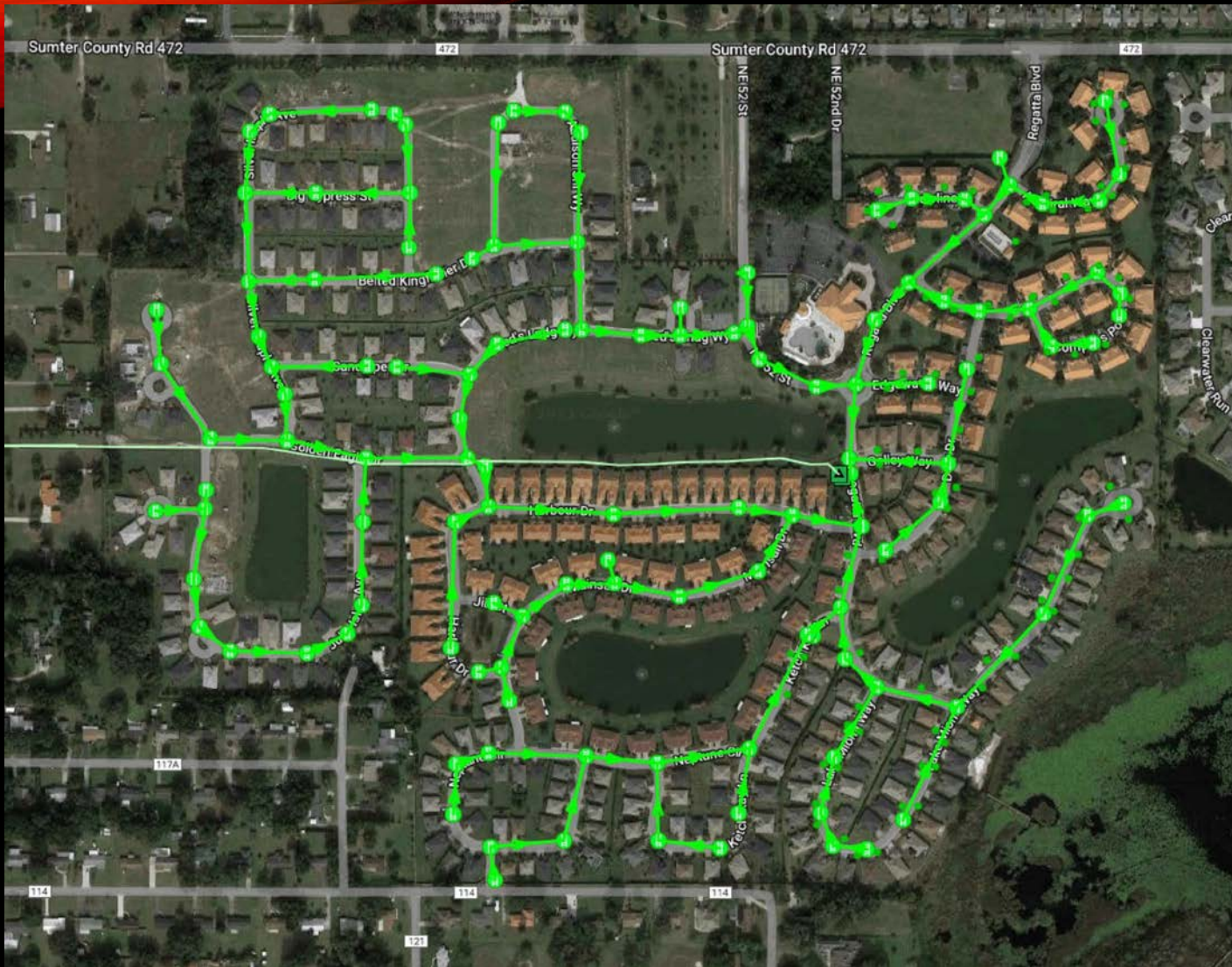
- 5,712 SERVICE CONNECTIONS
- OVER 525 ISOLATION VALVES
- OVER 175 FIRE HYDRANTS
- OVER 250 MILES OF DISTRIBUTION PIPING
- AND GROWING!



VALVE REPAIR

LIVE VALVE REPLACEMENT ON
SOUTH OLD WIRE ROAD
"TEAMWORK"





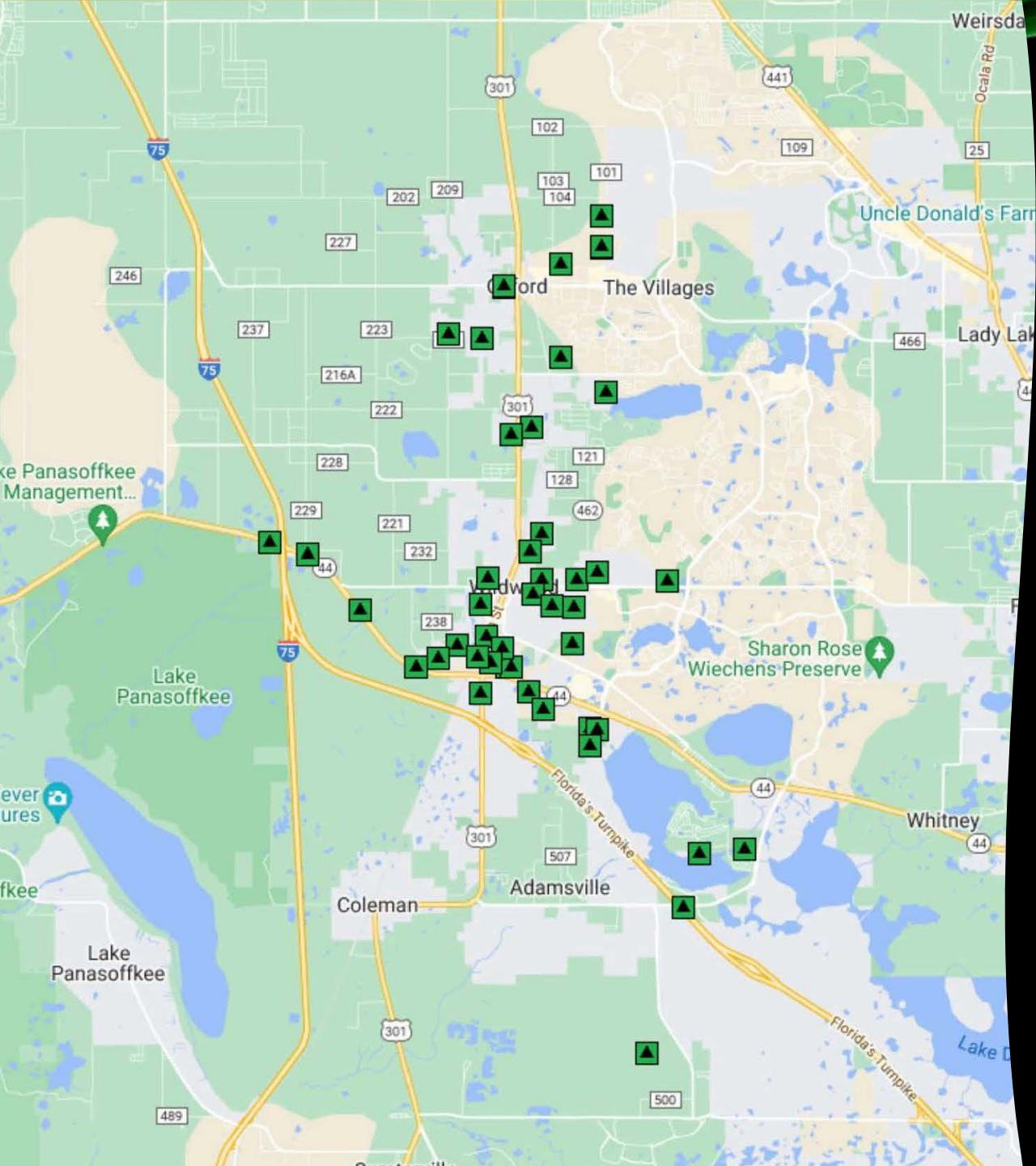
COLLECTION SYSTEM

- OVER 250 MILES OF SANITARY SEWER MAINS
- OVER 1,000 MANHOLES
- OVER 5,700 SANITARY SEWER CLEANOUTS

SERVICE LINE REPAIR

**THIS IS WHY THE PUBLIC WORKS
ROAD DEPARTMENT LOVES
UTILITIES. JOB SECURITY!**





LIFT STATIONS

- 54 TOTAL LIFT STATIONS IN THE SANITARY SEWER SYSTEM
- EACH STATION HAS A MINIMUM OF 2 PUMPS FOR A TOTAL OF 108 LIFT STATION PUMPS TO MAINTAIN AND REPAIR
- THE DEPARTMENT HAS ADDED DIFFUSED AIR FOR ODOR REMOVAL AND BACKUP GENERATORS TO PROVIDE CONTINUOUS SERVICE TO OUR CUSTOMERS
- ANNUALLY THE DEPARTMENT REHABILITATES ON AVERAGE 5 WETWELLS AND REPLACES 6 CONTROL PANELS IN AN EFFORT TO MAINTAIN EFFICIENT SERVICES TO OUR RESIDENTS

WASTEWATER TREATMENT PLANT

- ONCE COLLECTED IN THE LIFT STATIONS, THE SANITARY SEWER IS THEN PUMPED TO THE CITY'S WASTEWATER TREATMENT FACILITY
- ON AVERAGE, THE PLANT TREATS 2.0 MGD OF RAW WASTEWATER DAILY
- ONCE TREATED, THE EFFLUENT IS PUMPED TO THE CITY'S R.I.B. SITE, WHERE IT TRAVELS TO THE VILLAGES® FOR GOLF COURSES AND COMMON AREA IRRIGATION



UTILITY DEPARTMENT MAINTENANCE PLANS

VALVE MAINTENANCE
INCLUDES INSPECTIONS
AND FULL OPERATION
OF ALL 525 VALVES IN A
3-YEAR CYCLE

WATER METER
REPLACEMENT FOR 500
WATER METERS
ANNUALLY

FLUSHING PROGRAM -
FLUSH DEAD-END
WATER MAINS WEEKLY

COLLECTIONS SYSTEM -
INSPECT, CLEAN, AND
REPAIR 2 MILES OF
GRAVITY SEWER MAIN
ANNUALLY

REPAIR AND REHAB 90
MANHOLES ANNUALLY

REHAB 5 LIFT STATION
WETWELLS AND
REPLACE 6 LIFT STATION
CONTROL PANELS
ANNUALLY

GREASE AND MAINTAIN
OVER 75 TREATMENT
PLANT MOTORS AND
PUMPS ANNUALLY